

Sean Galbraith Photography  
Price List (July, 2011)  
[www.SeanGalbraith.com](http://www.SeanGalbraith.com)



"American Hotel - Chairs", 2010  
40"x50"

Editions available: 1, 4-20  
\$2500 (framed)



"Cass Technical High School - Inside Windows", 2010  
40"x50"

Editions available: 1-20  
\$2500 (framed)

Prices subject to increase as subsequent editions are sold. Prices may be subject to HST, which is not included in pricing listed herein. Unframed and limited additional sizes may be available. "Framed" includes a standard black museum frame and UV filtering glass. Mounted editions are artist proofs for exhibition purposes only.

Sean Galbraith Photography  
Price List (July, 2011)  
[www.SeanGalbraith.com](http://www.SeanGalbraith.com)



"University Club", 2010  
26"x36"

Editions available: 3-20  
\$1500 (framed)



"Farwell Building - Lightwell #2", 2011  
26"x48"

Editions available: 1-20  
\$2500

Prices subject to increase as subsequent editions are sold. Prices may be subject to HST, which is not included in pricing listed herein. Unframed and limited additional sizes may be available. "Framed" includes a standard black museum frame and UV filtering glass. Mounted editions are artist proofs for exhibition purposes only.

Sean Galbraith Photography  
Price List (July, 2011)  
www.SeanGalbraith.com



"Coal Mine - Change Room", 2011  
36"x49"

Editions available: 1-20  
\$2000 (framed)



"Abitibi Fire", 2006  
40"x55"

Editions available: 2-20  
\$2500 (framed)

Prices subject to increase as subsequent editions are sold. Prices may be subject to HST, which is not included in pricing listed herein. Unframed and limited additional sizes may be available. "Framed" includes a standard black museum frame and UV filtering glass. Mounted editions are artist proofs for exhibition purposes only.

Sean Galbraith Photography  
Price List (July, 2011)  
www.SeanGalbraith.com



"Hearn", 2006

44"x60"

Editions available: 9-20

\$3000 (framed)



"Lee Plaza - Piano", 2010

40"x50"

Editions available: 1-20

\$2500 (framed)



"Farwell Building - Lightwell #1"

Prices subject to increase as subsequent editions are sold. Prices may be subject to HST, which is not included in pricing listed herein. Unframed and limited additional sizes may be available. "Framed" includes a standard black museum frame and UV filtering glass. Mounted editions are artist proofs for exhibition purposes only.

Sean Galbraith Photography

Price List (July, 2011)

[www.SeanGalbraith.com](http://www.SeanGalbraith.com)

28"x36"

Editions available: 1-20

\$1500 (framed)



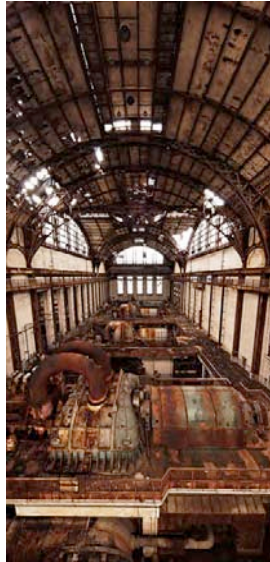
"Ghostwriter", 2006

24"x24"

Editions available: 5-20\*

\$1200

\*Note: A small number of un-editioned prints of this photo were sold before editioning began. These prints are notably smaller than the size currently offered. Four of the prints sold were large enough (12"x12") to be editioned.



"Eagle River Turbine Hall"

24"x48"

Editions available: 8-20

\$2000 (framed)

Prices subject to increase as subsequent editions are sold. Prices may be subject to HST, which is not included in pricing listed herein. Unframed and limited additional sizes may be available. "Framed" includes a standard black museum frame and UV filtering glass. Mounted editions are artist proofs for exhibition purposes only.

Sean Galbraith Photography  
Price List (July, 2011)  
www.SeanGalbraith.com



"Battery Factory"  
40"x50"

Editions available: 1-20  
\$2500 (framed)



"Hospital Entrance", 2006  
24"x24"

Editions available: 1-20  
\$1200 (framed)

Prices subject to increase as subsequent editions are sold. Prices may be subject to HST, which is not included in pricing listed herein. Unframed and limited additional sizes may be available. "Framed" includes a standard black museum frame and UV filtering glass. Mounted editions are artist proofs for exhibition purposes only.

Sean Galbraith Photography  
Price List (July, 2011)  
www.SeanGalbraith.com



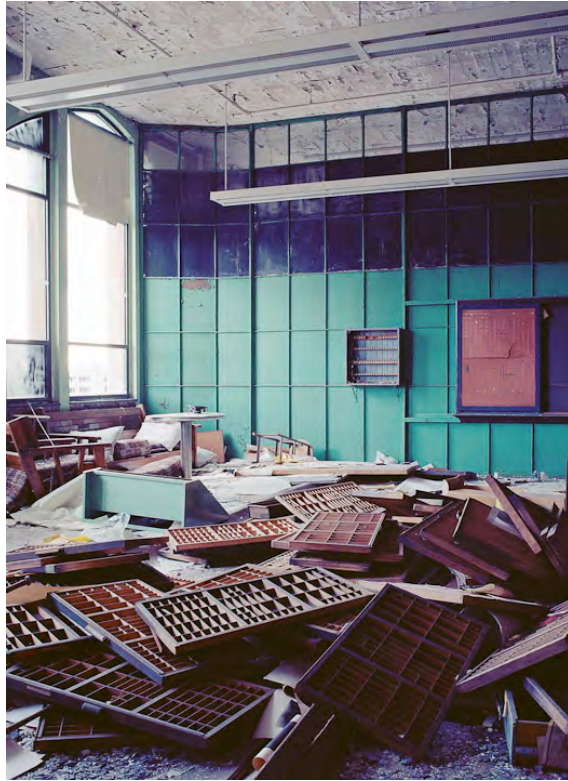
"Packard Automotive Plant - Valley", 2008  
28"x36"  
Editions available: 1-20  
\$1500 (framed)



"Delaware - Turbine", 2010  
28"x36"  
Editions available: 1-20  
\$1500 (framed)

Prices subject to increase as subsequent editions are sold. Prices may be subject to HST, which is not included in pricing listed herein. Unframed and limited additional sizes may be available. "Framed" includes a standard black museum frame and UV filtering glass. Mounted editions are artist proofs for exhibition purposes only.

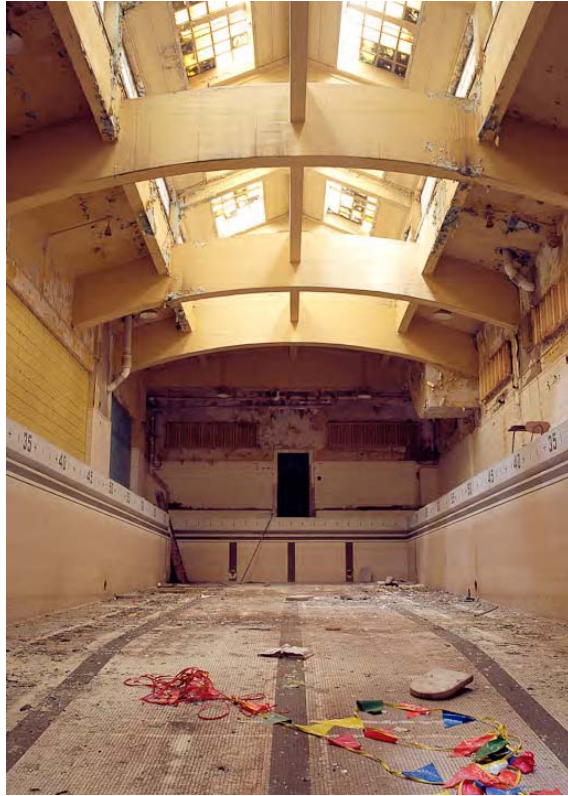
Sean Galbraith Photography  
Price List (July, 2011)  
[www.SeanGalbraith.com](http://www.SeanGalbraith.com)



"Cass Technical High School - Printshop", 2010  
26"x36"  
Editions available: 1-20  
\$1500 (framed)

Prices subject to increase as subsequent editions are sold. Prices may be subject to HST, which is not included in pricing listed herein. Unframed and limited additional sizes may be available. "Framed" includes a standard black museum frame and UV filtering glass. Mounted editions are artist proofs for exhibition purposes only.

Sean Galbraith Photography  
Price List (July, 2011)  
[www.SeanGalbraith.com](http://www.SeanGalbraith.com)



"Cass Technical High School - Deep End", 2010  
26"x36"  
Editions available: 1-20  
\$1500 (framed)



"Cass Technical High School - Metallurgy Lab", 2010  
26"x36"  
Editions available: 1-20  
\$1500 (framed)

Prices subject to increase as subsequent editions are sold. Prices may be subject to HST, which is not included in pricing listed herein. Unframed and limited additional sizes may be available. "Framed" includes a standard black museum frame and UV filtering glass. Mounted editions are artist proofs for exhibition purposes only.